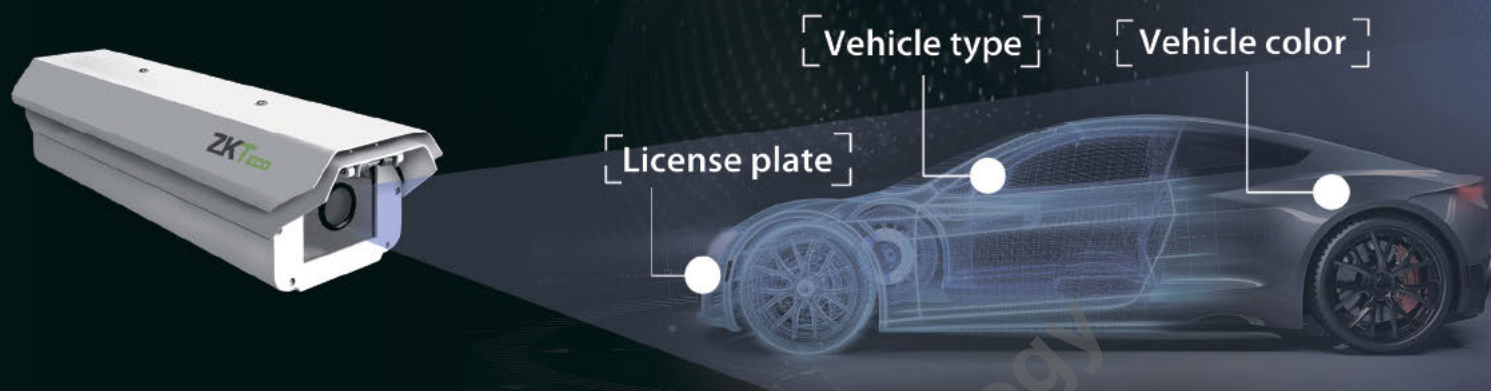


LPRC200

New License Plate Recognition Camera

with a Dual-core Processor for Outstanding Performance



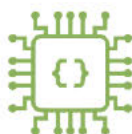
LPRC200 is the new intelligent license plate recognition camera that supports license plate recognition and can identify a vehicle's color, brand, and type. Compared with LPRC100, LPRC200 has higher performance in recognizing speed and accuracy due to its dual-core processor.

With embedded vehicle access software, LPRC200 supports offline operation. LPRC200 can work independently after being imported allowlist and blocklist data via a web browser, which usually applies in monthly parking management, especially under scenarios like the factory, governmental building, residential area, etc.

Features



IP65



With embedded vehicle access software



Vehicle list import and export via web server



Recognition of license plate number (by default), brand, color, and type of the vehicle



Free SDK and push protocol supporting 3rd-party integration

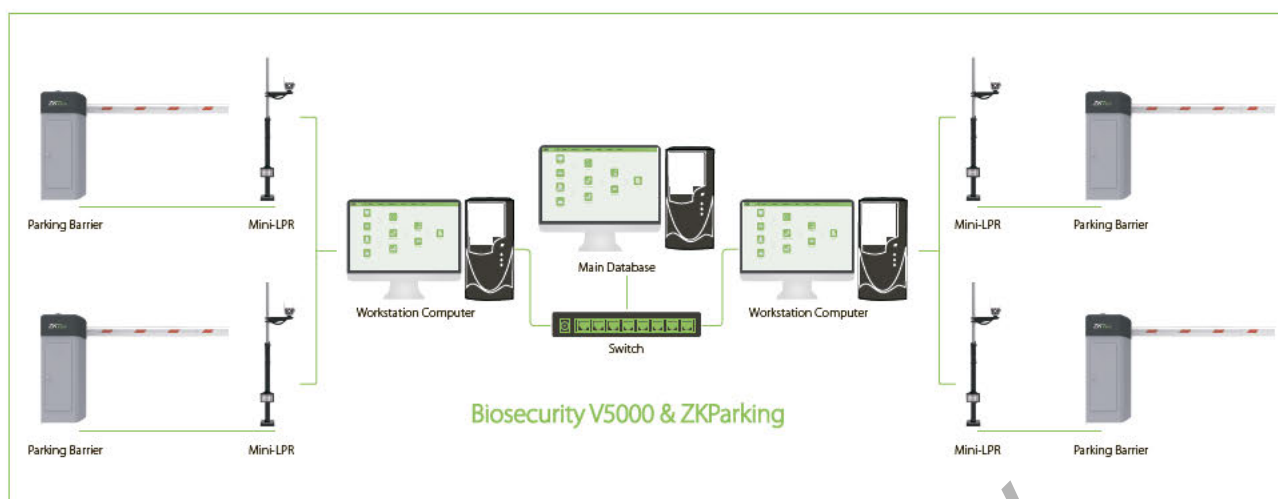


4G connection (optional)

Specifications

Model	LPRC200
License Plate Recognition Specifications	
License Plate Number Recognition Accuracy Rate	Day ≥ 99.9%, night ≥ 99.8%
Recognition Speed	≤100ms
Classification	Licence plate number, Car color, Car brand, Car type
Adaptable Speed of Car	Up to 40 km/h
Recognition Distance	3 ~ 10 m (recommended distance is 3.5 ~ 4m)
Output Information	License plate number, License plate picture, Access time
Supported Regions	Thailand, Argentina, Mexico, Chile, Colombia, Saudi Arabia, Brazil, Peru, Mongolia, Turkey, Egypt, Korea, Mainland China, Indonesia, United Arab Emirates, Myanmar, Spain, Russian
Offline Working Parameters	
Allowlist	1,000
Blocklist	1,000
Monthly Parking	8,000
Entry and Exit Records	10,000
Captured Pictures	10,000
Camera Parameters	
CPU	A7@800MHz, A17@1.25GHz
Flash	128MB
Image Sensor	1/2.8" 2MP CMOS sensor
Lens	Auto focus, 3.2mm-11.1mm
Resolution	1920 * 1080P
Communication Protocol	TCP/IP (10 / 100Mbps), 4G (optional), RTSP, ZKTECO, P2P, PUSH
I/O Interface	Two relays, RS485, Audio I/O, Barrier status input, Wiegand in & out, USB
Recognition Trigger	License plate detected
Protection Level	IP65
Working Voltage	12V DC
Power	≤7.5w
Working Temperature	-35°C to 60°C
Working Humidity	≤90%
Dimensions (L*W*H)	460 * 156 * 120 (mm)
Weight	2.5kg

System Topology



Applications



Communities



Business Centers



Governmental Buildings



Industrial Parks

Accessory Products



LPR-Fixed Column



LPR-Fill Light



LPR-Display Screen (Optional)

