

ProRF

RFID Access Control Terminal



ProRF is an elegantly designed RFID access control terminal. Its IP67 waterproof & dustproof level enables direct outdoor installation, and is even able to normally operate under extreme weather conditions in a temperature range of -20°C~65°C.

As an advanced terminal, ProRF is equipped with 2 relays of lock, alarm control, SRB for enhanced security, and auxiliary smoke detection input for fire security linkage. Its large storage capacity of up to 100,000 users/cards and 600,000 transactions is perfectly applicable to mega-size enterprise.

Features

- IP-based terminal, supports either standalone or network deployment
- IP67 waterproof design, suitable for indoor or outdoor applications
- Operating temperature: -20°C~65°C (-4°F~149°F)
- Full access control features

Specifications (G: GL Exclusive Feature)

Capacity

- G Users / Cards: 60,000 (Standard)
100,000 (Optional)
- Transactions: 600,000

Communication

TCP / IP
RS232 / RS485
Wiegand Input / Output
Security Relay Box

Access Control Interface

Lock Relay Output
Alarm Output / Auxiliary Input
Exit Button / Door Sensor
Doorbell Output

Hardware

1.0GHz High Speed CPU
Memory 64MB RAM / 128MB Flash

125KHz EM Reader / 13.56 MHz MF (Optional)
H D P ox (Op ona)

Beep & LED Indicator

Standard Functions

Access Levels / Groups / Holidays

Compatibility

Wiegand Slave Reader
ZKBioSecurity

Special Functions

- G IP67

Additional Info

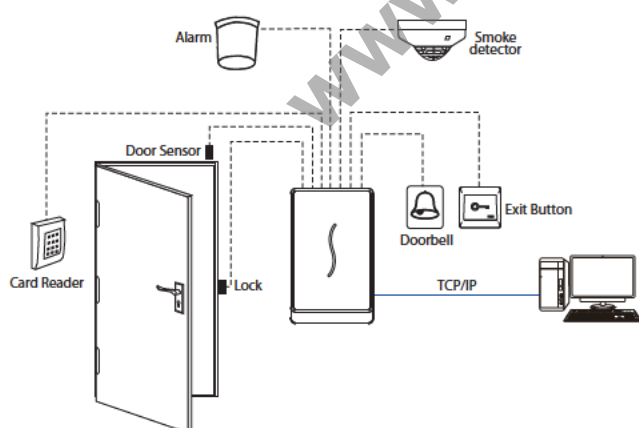
Working Temperature: -20 °C ~ 65 °C
(-4 °F ~ 14.9 °F)

Dimensions: 131* 80 * 20.6 mm

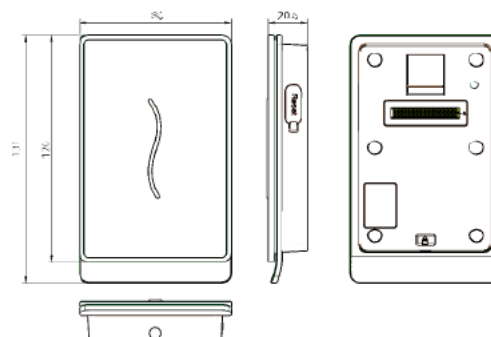
Power

Operating Voltage 12V DC
Current Draw < 500mA

Configuration



Dimensions (mm)



ZKTECO CO., LTD.

